

An aerial photograph of a city, likely Zurich, showing a wide river (Limmat) flowing through the center. Several bridges cross the river, with cars and a tram visible on one of them. The city skyline is visible in the background, featuring various skyscrapers and buildings under a hazy sky. The text 'PROTECTION SERVICE FOR BUSINESS' is overlaid on the image.

# **PROTECTION SERVICE FOR BUSINESS**

Technical Brochure



A black and white photograph of two men in a dimly lit office environment. They are both looking at computer monitors, which are partially visible on the right side of the frame. The man in the foreground is wearing glasses and has a beard. The background is dark, with some light coming from the monitors and a desk lamp.

# TOMORROW'S SECURITY, DELIVERED TODAY.

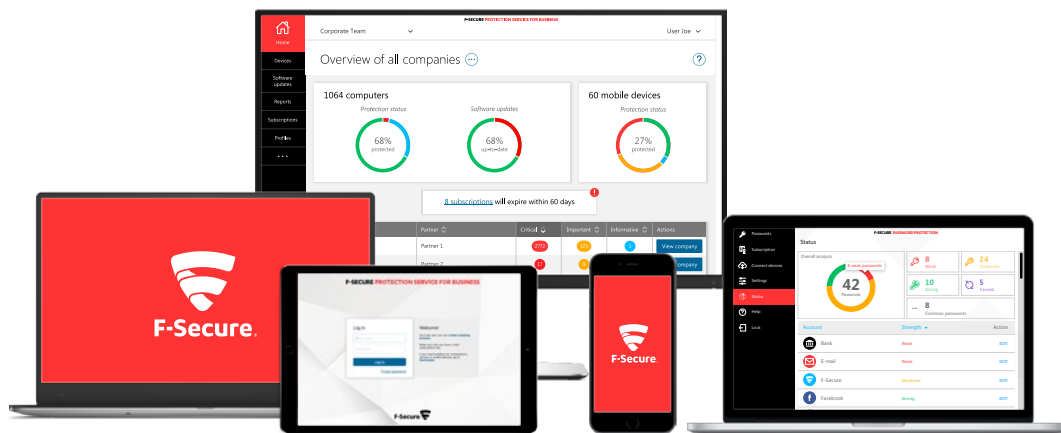
**Cyber security never stops. New attackers, tactics, and threats emerge every day. Hackers will never stop discovering and deploying new ways to breach your defenses.**

It means you can't afford to slow down either – you don't want to be an easy target. This is what makes cyber security so endlessly interesting and ruthlessly challenging all at once.

We are driven by that challenge.

F-Secure works tirelessly to stay one step ahead of the opposition. We know cyber security – and we are relentless.

Don't just take our word for it. In recognition of our success, we have won the prestigious 'Best Protection' award from AV-Test multiple years in a row. It is just one of the many proof points demonstrating that we deliver the best possible security now and in the future.



## CONFIDENCE THROUGH SECURITY

**Protection Service for Business is the best, most comprehensive endpoint protection package on the market, designed from the ground up to solve your challenging business security needs.**

It protects all your endpoints, from Windows and Mac to mobile devices, against threats like ransomware, data breaches and 0-day attacks, without requiring significant maintenance or management overhead.

Protection Service for Business is the only unified multi-endpoint security solution that comes with integrated Patch Management, Mobile Device Management, and a Password Manager.

We are proven to provide superior and more consistent protection than our competitors, as verified by independent security experts. Thanks to our pioneering security technologies, such as real-time threat intelligence and advanced machine learning algorithms, we are always one step ahead of the attackers.



## Computer Protection

**Powerful, layered, award-winning security for Windows & Mac computers.**

- AV-TEST Best Protection, 2010-2014 and 2016
- Includes patch management for Windows computers
- Uses advanced behavioral and heuristic analysis
- Leverages artificial intelligence and machine learning



## Freedom for Business

**Protect against malware and data loss on iOS and Android mobile devices.**

- Protects devices against malware and phishing
- Prevents data loss via stolen devices and Wi-Fi snooping
- Includes Mobile Device Management
- Third-party MDM support available



## Management Portal

**Deploy, manage, and monitor everything through a single cloud-based console.**

- Integrated mobile device management
- Integrated patch management
- Integrated password manager
- No server hardware required
- Full integration readiness for third-party management tools



## Password Protection

**Prevents data breaches and attacks leveraging weak or reused passwords.**

- Minimizes reused and weak passwords in the workplace
- Securely stores and manages all passwords, log-in credentials, etc. in one place
- Generates strong and unique passwords with one click
- All passwords are encrypted and stored locally



## Server Security

**Protect your mission-critical communication, collaboration and data storage.**

- Multi-platform server security
- Advanced behavioral analysis and heuristic analysis
- Fully integrated patch management
- Additional SharePoint & Exchange components



**FOR A FREE TRIAL  
GO TO**

[www.f-secure.com/PSB](http://www.f-secure.com/PSB)

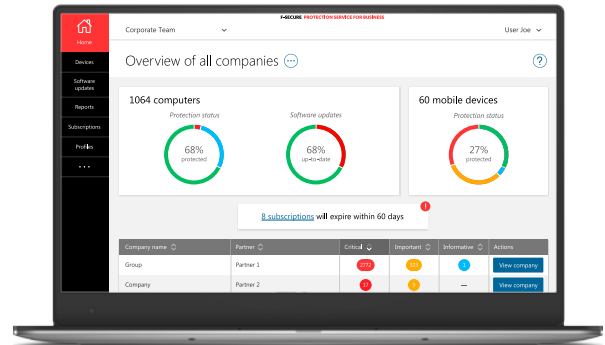
# COMPUTERS

**Protection Service for Business** provides powerful and modern security for your Mac\* and Windows endpoints. With tools like Patch Management and real-time threat intelligence provided through the F-Secure Security Cloud, your security rises to a whole new level.

## Supported OS:

Windows 7, 8, 8.1, 10

OSX 10.10, 10.11, 10.12 1



## Advanced Anti-malware

Advanced anti-malware platform that uses multi-engine detection capabilities, offering vastly better security without being reliant on a single technology.

## DeepGuard

Offers proactive protection against 0-day malware and exploits through the use of heuristic and behavioral analysis.

## Lightweight

Minimal performance impact; can be used with both new and old hardware.

## Firewall

F-Secure Firewall uses default Windows engine to execute firewall rules, based on extensive list of advanced rules created by our penetration testers.

## Security Cloud

Our threat analysis and response systems provide our clients with real-time threat intelligence, allowing them to identify and respond to new threats as they emerge.

## Device Control

Enables control over USB-based devices, preventing data loss and malware infections via them.

## Patch Management

Automatic patching of 2500+ Windows and 3<sup>rd</sup> party software, with options for exclusions and manual updates. Blocks up to 80% of malware by preventing them from exploiting existing vulnerabilities.

## Web Protection

Provides extensive and proactive web protection; it blocks malicious content, and scripts, giving added protection for business critical web activity and preventing end-users from accessing malicious or phishing sites.



## MOBILES

**Protection Service for Business** gives you an easy way to secure and control your mobile devices, both iOS and Android, wherever they are. You get everything you need in one package: mobile device management, anti-malware, and VPN.

### Supported OS:

iOS 9.x and later

Android 4.0.3 and later

### Mobile Device Management

Allows you to configure and enforce passcode policies, and remotely lock or wipe lost or stolen devices.

### Mobile VPN

Automatically encrypts (VPN) all traffic between mobile devices and a selected F-Secure service node, allowing safe use of public Wi-Fi and mobile networks.

### Lightweight Client

Heavy security functions are in the cloud, ensuring minimal impact on mobile performance and battery life.

### Ultralight Anti-malware

When the VPN is active, our service node protects the phones against malware and malicious content. Android APK packages are also scanned locally.

### Security Cloud

Our threat analysis and response systems provide our clients with real-time threat intelligence, allowing them to identify and respond to new threats as they emerge.

### Web Protection

Prevents users from accessing malicious and phishing websites, even before they are accessed.

### Faster Browsing

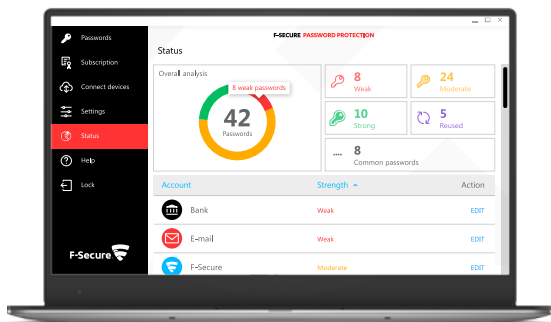
Increases browsing speed by up to 30% by using traffic compression and blocking resource-intensive online tracking and advertising.

### Device Status

Provides detailed information about the devices, such as vulnerable OS versions and whether they are rooted or not.

### External MDM

Supports deployment via third party MDM solutions, such as AirWatch, MobileIron, Intune and MaaS360.



# PASSWORDS

63% of data breaches result from weak or stolen passwords.\* F-Secure Protection Service for Business helps you lower the risk of data breaches that could lead to a heavy fine under the new General Data Protection Regulation.

\* SOURCE: VERIZON 2016 DATA BREACH INVESTIGATIONS REPORT.

## Supported Platforms\*:

Windows 7 and later

Mac OS X version 10.7 and later

## AES-256 Encryption

The password data is encrypted using AES-256, the recommended standard for modern data encryption.

## Password Recovery

Users can recover their master password via pre-generated QR code. F-Secure cannot access or recover the data, to maximize the security and confidentiality of the data.

## Ease of use

Convenient and easy password hygiene encourages high adoption rates and better security. No need for end-users to remember “yet another password”.

## Password Manager

Store and manage all passwords, log-in credentials, emails, etc. securely in one place.

## Password Generator

Creates strong, unique passwords with one click, ensuring stronger protection against non-malware-based breach attempts using weak or reused passwords.

## Local Storage

All passwords are encrypted and stored locally on the device. F-Secure cannot access the data.

## Synchronization

Supports synchronization and use of password manager across different Windows and Mac devices.

# MANAGEMENT

Everything in **Protection Service for Business** is managed through a single cloud-based console. This includes deployment, management and monitoring of all endpoint security components, their profiles and integrated tools – saving you time in management and maintenance tasks.

## Supported browsers:

Latest Firefox, Safari, Edge, Explorer and Chrome.

### Centralized Management

Consolidates the management of all endpoint components and integrated tools into one cloud-based management console.

### Hosted Management Portal

Does not require the installation of management servers or special software, works on any device. Fully HTML5 implemented.

### Easy Deployment

Endpoint security clients can be deployed by email, local installation, batch script, or a domain-based remote installation tool.

### Uninstallation Tool

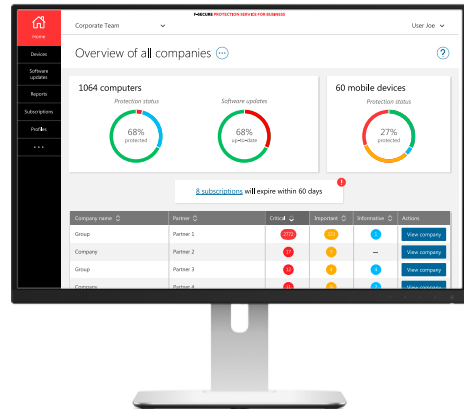
Conflicting security solutions are automatically removed during deployment of Windows clients, ensuring a smooth transition process.

### Policy Setting

Security policies can be created, customized, and assigned individually or in groups by using labels.

### Automatic Updates

Portal and clients automatically deploy product, security, and database updates, reducing maintenance work.



### Patch Management

3<sup>rd</sup> party software Patch Management can be set to work automatically on set dates, with the option to create exclusions or handle updates manually if required.

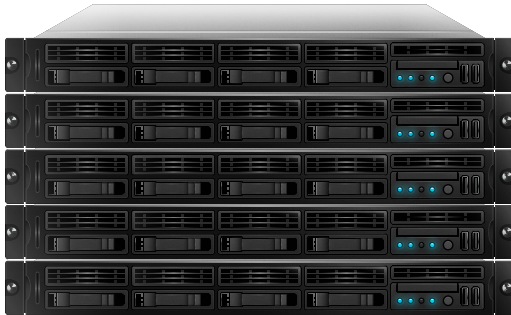
### Extensive Reporting

Detailed graphical reports, such as “most attacked clients” with threat details, vulnerability reports based on missing patches and more.

### Management API

Supports integration via API to SIEM, RMM or any other 3rd party auditing, management or reporting tool.





# SERVERS

**Protection Service for Business** offers you the utmost security for your servers, while keeping them running at peak performance. Dedicated security components are available for Exchange, SharePoint, and Citrix servers.

## **Supported Platforms\*:**

Microsoft Windows Server operating systems, Microsoft Windows Terminal Server, Microsoft Exchange Server, Microsoft SharePoint Server, Citrix Server, Linux Server

### **Advanced Anti-malware**

Advanced anti-malware platform that uses multi-engine detection capabilities, offering vastly better security without being reliant on a single technology.

### **DeepGuard**

Offers proactive protection against 0-day malware and exploits through the use of heuristic and behavioral analysis.

### **Patch Management**

Covers 2500+ server and 3<sup>rd</sup> party software, such as Apache, BizTalk, Microsoft SQL, Flash, Java, and many others.

### **Security Cloud**

Our threat analysis and response systems provide our clients with real-time threat intelligence, allowing them to identify and respond to new threats as they emerge.

### **Web Protection**

Provides proactive web protection for terminal users by blocking malicious content in web traffic and by preventing access to malicious and phishing sites.

### **Exchange**

Adds support for scanning message bodies and attachments for malicious content for inbound, outbound, and internal mail. Includes high-accuracy spam filtering.

### **SharePoint**

Multi-engine malware detection support for uploads and downloads.

### **Citrix**

Adds full security stack support for Citrix. Citrix Ready certified. Adds patch management support for published applications.

# BEST ENDPOINT PROTECTION

**In cyber security, consistent results are a sure sign of success. You need solutions from an experienced vendor that you can trust to protect your business for many years, not just today.**

F-Secure is the only vendor to have won the prestigious 'Best Protection' award from AV-Test five times since its inception in 2011. This proven consistency is your guarantee that we deliver the best possible security, now and in the future.

"To pass every certification test in 2016 with nearly 100% protection is an excellent achievement. We are rewarding this achievement with the Best Protection 2016 award."

**Maik Morgenstern, CTO, AV-TEST**

F-Secure

5

Symantec

4

Kaspersky

3

Bitdefender

1

Trend Micro

1

McAfee

0

Panda

0

Microsoft

0

ESET

0

Sophos

0

**FOR A FREE TRIAL**  
**GO TO**

[www.f-secure.com/PSB](http://www.f-secure.com/PSB)

# ABOUT F-SECURE

Nobody knows cyber security like F-Secure. For three decades, F-Secure has driven innovations in cyber security, defending tens of thousands of companies and millions of people. With unsurpassed experience in endpoint protection as well as detection and response, F-Secure shields enterprises and consumers against everything from advanced cyber attacks and data breaches to widespread ransomware infections. F-Secure's sophisticated technology combines the power of machine learning with the human expertise of its world-renowned security labs for a singular approach called Live Security. F-Secure's security experts have participated in more European cyber crime scene investigations than any other company in the market, and its products are sold all over the world by over 200 broadband and mobile operators and thousands of resellers.

Founded in 1988, F-Secure is listed on the NASDAQ OMX Helsinki Ltd.

[www.f-secure.com](http://www.f-secure.com)  
[www.twitter.com/fsecure](https://www.twitter.com/fsecure)  
[www.facebook.com/f-secure](https://www.facebook.com/f-secure)

